



COMMUNITY PROFILE

Galax/Carroll/Grayson, Virginia



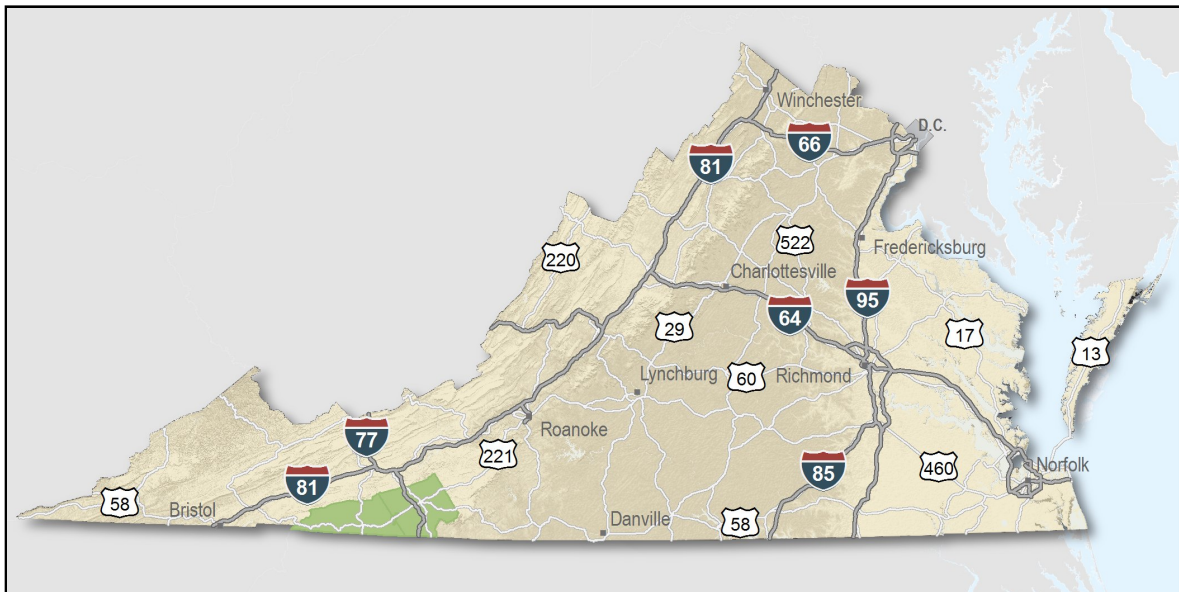
**VIRGINIA ECONOMIC
DEVELOPMENT PARTNERSHIP**
www.YesVirginia.org

State Map

Only a few locations can guarantee the right combination of resources that are crucial to your business's success. Virginia's premier location offers excellent domestic and international access. Centrally located on the U.S. East Coast, 40 percent of the U.S. population is within a day's drive, and our integrated transportation system of highways, railroads, airports and seaports ensures that you can reach every one of your markets efficiently. Close proximity to Washington, D.C. facilitates contact with policy makers and the federal government system.

Virginia continues to rank among America's leading states for business by CNBC and Forbes.com. Business-first values, easy access to markets, stable and competitive operating costs, and a talented workforce all drove Virginia to the top. This unique combination of assets has encouraged businesses to prosper here for more than 400 years. Like you, they searched the world over for that convergence of resources that would help ensure their prosperity. For them, their search ended here. Chances are yours will too.

- AAA bond rating- Virginia has maintained a AAA rating since 1938, longer than any other state.
- Right-to-work law allows individuals the right to work regardless of membership in a labor union or organization.
- Corporate income tax rate of 6% has not been increased since 1972.
- Headquarters to 37 Fortune 1000 firms.
- Headquarters to 52 firms each with annual revenue over \$1 billion.
- More than 17,300 high-tech establishments operate in Virginia.
- More than 700 internationally-owned businesses from 45 countries are located in Virginia.
- Ranks third among the 50 states as a recipient of federal R&D funds.
- Streamlined permitting process.
- Recruitment training programs to help new businesses become operational faster.
- Programs at little or no cost to help businesses increase international sales.



Location

Located in southwest Virginia along the border with North Carolina and Tennessee, the Blue Ridge Crossroads region is bisected by Interstate-77 and is immediately south of its intersection with Interstate-81.

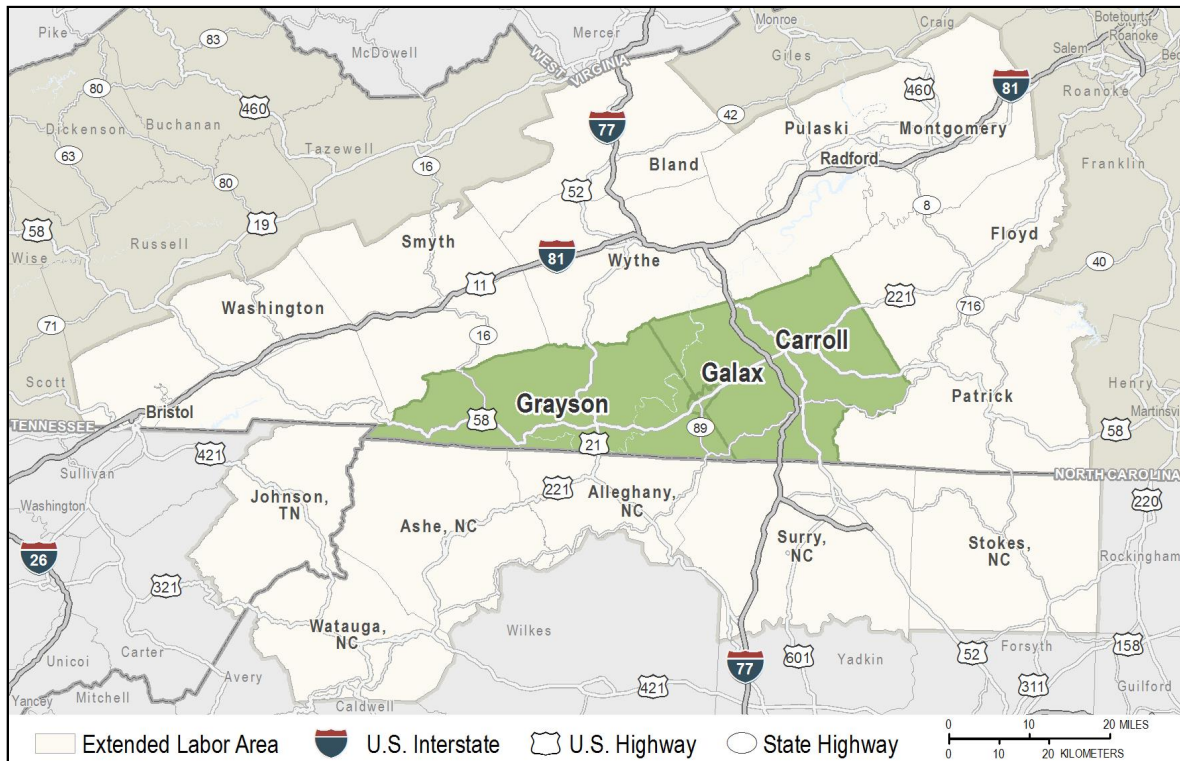
Interstates 77 and 81 provide easy access to Virginia, North Carolina, and Mid-Atlantic markets, and a day's drive to 80 percent of the nation's population.

The closest markets by interstate include Richmond, Raleigh, Charlotte, Greensboro/Winston-Salem, and Knoxville (within 2 to 4 hours).

Additional markets within 6 hours include Washington, DC, Baltimore, Norfolk, Wilmington, Savannah, and Atlanta.

The New York/Philadelphia, Detroit, Indianapolis, Memphis, and Jacksonville markets are located within 600 miles (8 to 10 hours by interstate).

Air travel- Charlotte-Douglas International Airport is located two hours south by interstate from the Blue Ridge Crossroads region.

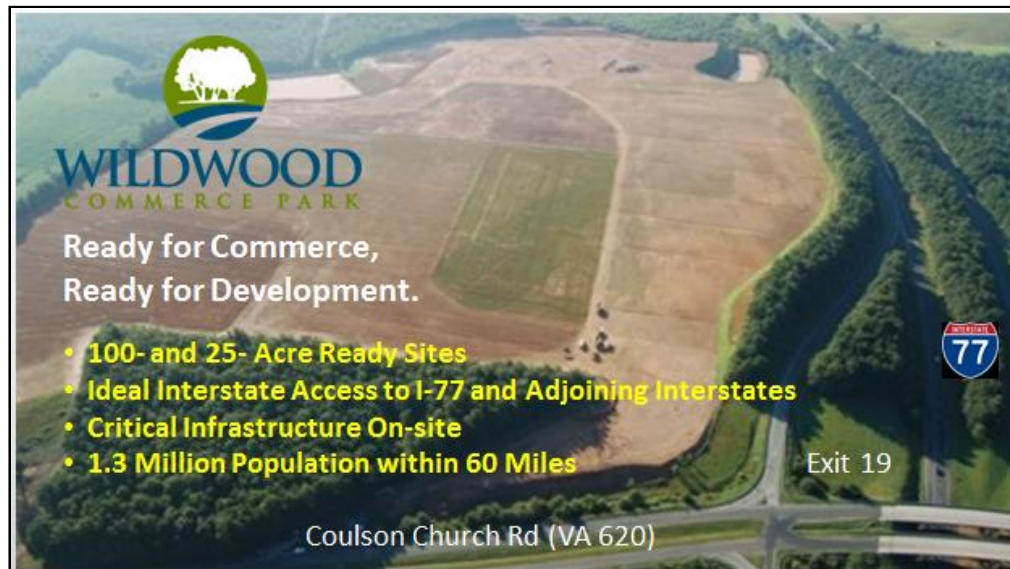


Galax/Carroll/Grayson

Galax/Carroll/Grayson

In 2004, the Virginia General Assembly designated Carroll County, the City of Galax, and Grayson County as "Virginia's Entrepreneurial Region." To leverage local resources, the localities organized the Blue Ridge Crossroads Economic Development Authority. Regional collaboration has generated tangible results with the creation of one of the most successful Small Business Development Centers (SBDC) in Virginia, the creation of The Wired Road Broadband Authority to deliver fiber communications infrastructure, and the development of Wildwood Commerce Park- a 273-acre industrial park located at Exit 19 of Interstate-77. Wildwood is "ready" with physical infrastructure in place and with graded 100- and 25-acre graded sites. Wildwood is located within Virginia Enterprise, Foreign Trade, and HUB zones, as well being located within the Virginia Tobacco region.

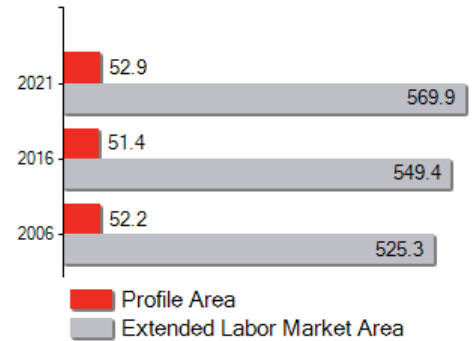
"Galax is an ideal location for us to serve our Northeast markets," said Richie McLarty, President of Albany Industries, manufacturer of upholstered household furniture. "This is a pro-business community with a workforce that's a perfect match for our needs."



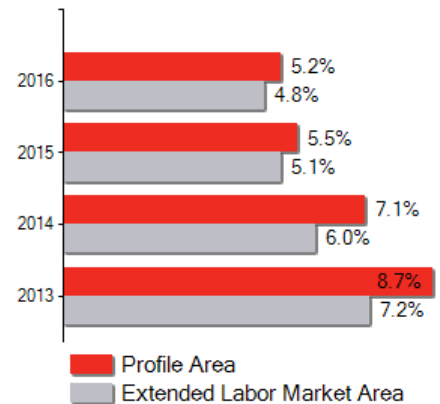
Labor Market

Population		
Gender Distribution (2014)		
	Male	Female
Galax/Carroll/Grayson	49.0%	51.0%
Race/Ethnicity (2010)		
	Profile Area	Extended Labor Area
Classification		
White	49,434	510,220
Black	1,087	19,179
Two or More	562	8,221
American Indian or Alaska Native	152	1,886
Asian	142	9,629
Pacific Islander	36	230
Hispanic (may be of any race)	2,412	20,851
Median Age (2010)		
Carroll		47 years
Galax		43 years
Grayson		49 years

Population in Thousands



Unemployment Rates



Labor Market

Civilian Labor Force (2016)	
Galax/Carroll/Grayson	22,867
Extended Labor Market Area	263,843
Total	286,710

Labor Force Participation (2006-2010)	
Galax/Carroll/Grayson	55.0%
Extended Labor Market Area	56.0%

Recent manufacturing expansions include Vaughan-Bassett Furniture adding 115 jobs and Guardian Industries creating forty jobs with a solar energy product line. Core Health & Fitness manufactures the Nautilus-brand of commercial fitness equipment in Grayson County. In 2011, Mississippi-based Albany Industries selected Galax to expand its manufacturing of upholstered household furniture with over 300 new jobs and to gain better access to the eastern US market. In 2014, Vanguard Furniture selected Carroll County to locate an expansion project, creating 50 new jobs.

Unemployment	
Unemployment Rate (November 2011)	
Galax/Carroll/Grayson	9.5%
Extended Labor Market Area	8.0%
Statewide	6.1%
Unemployed (2010)	
Galax/Carroll/Grayson	2,881
Extended Labor Market Area	25,963
Total	28,844
Underemployed (2nd Quarter 2015)	
Galax/Carroll/Grayson	2,694
Extended Labor Market Area	32,263
Total	34,957

Labor Market

Commute Time (2011-2015)		
Worked from home	517	2.4%
Under 15 minutes	5,896	27.8%
15-24 minutes	6,133	28.9%
25-34 minutes	4,120	19.4%
35-44 minutes	1,367	6.4%
45-59 minutes	2,083	9.8%
Over 60 minutes	1,624	7.7%
Mean Travel Time to Work (minutes)		
Carroll		25
Galax		23
Grayson		29

A high percentage of the workforce is trained in manufacturing, forest products, light trades, and information technology.

Additional Labor Resources	
High School Graduates Not Continuing (2009-2010)	92
Two-Year College Graduates (Spring 2010)	1,687
Other College and University Graduates (Spring 2010)	2,329
Total	4,108

Labor Market

Career Readiness Certificate (01/01/2016-08/31/2017)

Virginia's Career Readiness Certificate (CRC) assists employers by certifying that a recipient possesses core skills in applied math, reading for information, and locating information. The CRC certification is based on established Workeys® assessment tests. Virginia uses a three-tiered approach (bronze, silver, gold) to credentialing certificate holders that is based on the recipient's level of development skills.

Galax/Carroll/Grayson	125
Extended Labor Market Area	5,043
Total	5,168

Educational Attainment

On-Time Graduation Rate (Class of 2011)	NaN
Percentage of Galax/Carroll/Grayson population age 25+ who are high school graduates (2011-2015)	78.5%
Percentage of Galax/Carroll/Grayson population age 25+ who have earned a Bachelor's Degree or higher (2011-2015)	12.8%

Industry in Grayson County includes a cluster of advanced fabric and gaskets manufacturers including Darco Southern, McAllister Mills, and Tritex, with combined employment of approximately 100 workers. McAllister Mills is featured in the June 2012 edition of Virginia Business magazine.

Labor Market

Employment by Sector* (1st Qtr. 2012)		
Agriculture Forestry Fishing and Hunting	326	2.1%
Mining Quarrying and Oil and Gas Extraction	N.D.	N.D.
Utilities	N.D.	N.D.
Construction	357	2.3%
Manufacturing	2,972	19.4%
Wholesale Trade	184	1.2%
Retail Trade	2,056	13.4%
Transportation and Warehousing	247	1.6%
Information	98	0.6%
Finance and Insurance	292	1.9%
Real Estate and Rental and Leasing	84	0.5%
Professional Scientific and Technical Services	310	2.0%
Management of Companies and Enterprises	42	0.3%
Administrative and Support and Waste Management	763	5.0%
Educational Services	N.D.	N.D.
Health Care and Social Assistance	2,454	16.0%
Arts Entertainment and Recreation	59	0.4%
Accommodation and Food Services	1,276	8.3%
Other Services	312	2.0%
Total Government	3,413	22.2%
Federal Government	116	0.8%
State Government	850	5.5%
Local Government	2,447	15.9%
Unclassified	11	0.1%
Total	15,354	100.0%

N.D. - Not Disclosed

*By Business Establishment

Two-thirds of the region's workforce of 24,000 work within the region.

Labor Market

Major Employers

Manufacturing

<i>Company</i>	<i>Product/Service</i>
Albany Industries, Inc.	Upholstered Household Furniture
Barker MicroFarads	Electronic components
Catepillar (CAT)	Mining Equipment
Consolidated Glass & Mirror Corporation	Mirrors & glass
Core Health & Fitness, LLC	Fitness Equipment (Nautilus brand equipment)
Darco Southern, Inc.	Gaskets
Hansen Turbine	Aircraft and turbine parts coating
Independence Lumber Company, Inc.	Sawmill
Key Logistics Solutions, LLC	Automotive components
McAllister Mills	High Temperature Fabric
Mohawk ESV Incorporated	Carpet Backing
Moog, Inc.	Printed Circuit Boards
Parkdale Mills/Magnolia Manufacturing	Cotton Yarn
Tritex, LLC	High temperature fabric
Turman Hardwood Flooring	Hardwood Flooring
Turman Sawmill	Millwork & Dimension Lumber
Vanguard Furniture	Upholstered furniture
Vaughan-Bassett Furniture	Household Furnishings
Virginia Produce Co, LLC	Agricultural food products processing/packaging

NonManufacturing

<i>Company</i>	<i>Product/Service</i>
DLB, Inc.	Heavy Construction/ Highways & Bridges

Unemployment rates in the region trend similarly to Virginia and US averages but are generally 2 to 4% higher, which is indicative of an available workforce.

Labor Market



Union Activity (1/2006 - 4/2011)	
Petitions filed for decertification	0
Petitions filed for representation	0
Petitions filed for raid	0
Elections won by union	0
Elections won by company	0

Labor Market

Estimated Earnings (May 2010)

<i>Occupation</i>	<i>Median Wage</i>	<i>Mean Wage</i>	<i>Median Salary</i>	<i>Mean Salary</i>
Laborers and Freight, Stock, and Material Movers, Hand	\$11.07	\$11.84	\$23,040.98	\$24,617.86
Industrial Truck and Tractor Operators	\$15.66	\$15.67	\$32,581.47	\$32,583.45
Heavy and Tractor-Trailer Truck Drivers	\$17.18	\$17.58	\$35,719.37	\$36,579.12
Welders, Cutters, Solderers, and Brazers	\$16.68	\$17.70	\$34,700.10	\$36,810.65
Machinists	\$17.23	\$17.27	\$35,840.75	\$35,928.11
Team Assemblers	\$12.62	\$13.80	\$26,240.99	\$28,708.93
First-Line Supervisors of Production and Operating Workers	\$24.04	\$26.16	\$50,016.03	\$54,406.90
Maintenance and Repair Workers, General	\$14.92	\$15.29	\$31,030.95	\$31,804.61
Industrial Machinery Mechanics	\$18.39	\$19.42	\$38,250.45	\$40,396.42
Bus and Truck Mechanics and Diesel Engine Specialists	\$18.26	\$18.90	\$37,979.97	\$39,313.49
Office Clerks, General	\$12.80	\$14.06	\$26,624.00	\$29,244.12
Secretaries and Administrative Assistants, Except Legal, Medical, and Executive	\$14.01	\$14.67	\$29,130.78	\$30,520.49
Receptionists and Information Clerks	\$12.32	\$13.43	\$25,637.62	\$27,920.79
Customer Service Representatives	\$10.69	\$12.57	\$22,246.57	\$26,146.13
Bookkeeping, Accounting, and Auditing Clerks	\$14.36	\$15.00	\$29,863.93	\$31,209.73
First-Line Supervisors of Office and Administrative Support Workers	\$19.15	\$21.14	\$39,832.87	\$43,960.13
Mechanical Engineers	\$35.39	\$35.10	\$73,610.70	\$72,992.99
Computer User Support Specialists	\$21.15	\$21.39	\$44,006.22	\$44,476.08
Accountants and Auditors	\$29.72	\$31.81	\$61,827.50	\$66,151.04
Human Resources Specialists	\$22.01	\$24.57	\$45,780.31	\$51,103.86

Median Family Income (FY 2010)

Education

Public School Enrollment (Fall 2016)

<i>Level</i>	<i>Number</i>	<i>Enrollment</i>
Elementary	10	2,558
Combined	3	717
Middle	3	1,371
High School	3	2,166

Student Teacher Ratio (2010-2011)

Elementary	12:1
Secondary	9:1

Per Pupil Expenditure (FY 2010)

\$10,674.73

On-Time Graduation Rate (Class of 2011)

NaN

High School Graduates Continuing Education (2009-2010)

82.3%

Advanced Programs (2015-2016)

Governor's Schools

A. Linwood Holton Governor's School

Southwest Virginia Governor's School For Science, Mathematics & Technology

Governor's STEM Academies and Health Academies

Blue Ridge Crossroads Governor's Academy for Technical Education (BRCGATE)

Governor's School Enrollment	14
Students taking 1 or more Advanced Placement (AP) Courses	10
Students taking 1 or more AP Exams	9
Students taking 1 or more Dual Enrollment Courses	540

College/university consortiums offer strong programs to the area. Major universities, including Virginia Tech, Radford University and Wake Forest University, are located within a 1½ hour drive.

Education

Workforce Development Facilities	
<i>Facility</i>	<i>Type</i>
Bristol Workforce Center	Satellite Center
Galax Workforce Center	Satellite Center
Goodwill Industries of the Valleys-Giles	Satellite Center
Goodwill Workforce Services-Christiansburg/Floyd	Satellite Center
People Inc. of Virginia - Abingdon	Satellite Center
Pulaski Workforce Center	Satellite Center
Southwest Virginia Alliance for Manufacturing Center of Excellence	Center of Excellence
The Crossroads Institute	Career and Technical Center
Virginia Workforce Center-Radford	Satellite Center
Virginia Workforce Center-Wytheville	Comprehensive Center

The cooperative efforts of Wytheville Community College (WCC), Crossroads Institute, and the Workforce Investment Board (WIB) provide an array of workforce training resources.

Higher Education Facilities — Fall 2016	
<i>Facility</i>	<i>Enrollment</i>
Radford University	9,401
New River Community College	4,456
Wytheville Community College	2,745
Northeast State Community College - Bristol Campus	172

Transportation

Interstates

Name	Distance
I-77	0.0 miles (0.0 km.)
I-81	7.2 miles (11.5 km.)
I-381	28.1 miles (45.2 km.)
I-40	37.2 miles (59.8 km.)
I-26	41.6 miles (66.9 km.)
I-581	44.8 miles (72.0 km.)

Note: Measured from border of locality/region.

Interstates 77 and 81 offer an excellent transportation network to major markets in the eastern US and Canada.

Highways

Highway 100	Highway 148	Highway 16	Highway 21	Highway 221
Highway 274	Highway 48	Highway 52	Highway 58	Highway 89
Highway 93	Highway 94	Highway 97		

Commercial Air Service

Piedmont Triad International Airport, Greensboro, NC -- 82.4 miles (132.6 km.)

American Airlines	American Eagle	Delta Air Lines
Frontier Airlines	United Airlines	Allegiant Air

Note: Within a 75-mile drive of the center of the locality.

Transportation

General Aviation Service

<i>Name</i>	<i>Runway Length</i>
Twin County Airport, Galax	4,204 ft (1,281 m)

Freight Rail Service

Norfolk Southern Railway Company

Seaports

<i>Name</i>	<i>Distance</i>
Port of Virginia	338.0 miles (544.0 km)

Note: Driving distance from the center of the locality to Port of Virginia and any other seaports within 100 miles.

Other Ports of Entry

<i>Name</i>	<i>Distance</i>
New River Valley Airport (Virginia TradePort)	35.5 miles (57.2 km)
Winston Salem	82.4 miles (132.6 km)
Tri Cities	97.5 miles (156.9 km)
Port of Washington - Dulles	305.9 miles (492.3 km)

Note: Driving distance from the center of the locality to Port of Washington - Dulles and any other port of entry within 100 miles.

Charlotte-Douglas International Airport (CLT), which offers non-stop international flights to London, Munich and Frankfurt, is a two-hour drive south. Additional airports include Piedmont Triad International (GSO), Roanoke Regional Airport (ROA), and Tri-Cities Regional Airport (TRI)- all within a two-hour interstate drive of the Blue Ridge Crossroads region. The Twin County Airport (HLX) is a General Aviation airport located in Hillsville with a 4,200-foot runway.

Utilities

Utilities	
Electric	Appalachian Power
Natural Gas	Atmos Energy
Telecommunications	Sprint/United Telephone-Southeast
Water	Carroll County Public Service Authority
Water	City of Galax
Water	Town of Fries
Water	Town of Hillsville
Water	Town of Independence
Water	Town of Troutdale
Waste Water Treatment	Carroll County Service Authority
Waste Water Treatment	City of Galax
Waste Water Treatment	Town of Fries
Waste Water Treatment	Town of Hillsville
Waste Water Treatment	Town of Independence
Solid Waste Disposal	Carroll-Grayson-Galax Solid Waste Authority

Appalachian Power offers very affordable electric rates. Redundant telecommunications are available throughout the region. "The Wired Road" is a broadband initiative that transverses the region.

Financial Institutions

Financial Institutions — 4th Qtr 2010 Assets	
<i>Bank</i>	<i>Assets (millions)</i>
Wells Fargo Bank, N.A.	\$1,727,235.0
Branch Banking and Trust Company	\$214,433.0
First-Citizens Bank & Trust Co.	\$32,814.8
WoodForest National Bank	\$4,854.5
Carter Bank & Trust	\$4,505.5
First Community Bank, N.A.	\$2,377.5
The National Bank of Blacksburg	\$1,230.5
Grayson National Bank	\$558.5

There are several local and national banking institutions located within the area.

Government and Taxes

Government

The Blue Ridge Crossroads region is comprised of Carroll County, the City of Galax and Grayson County. In addition, four municipalities include the towns of Fries, Hillsville, Independence, and Troutdale, with a combined regional population of 54,000.

Carroll County's government, located in Hillsville, is governed by a six-member Board of Supervisors, elected through districts, that appoints a County Administrator. The City of Galax is governed by a seven-member Mayor and City Council that appoints a City Manager. Grayson County's government, located in Independence, is governed by a five-member Board of Supervisors, elected through districts, that appoints a County Administrator.

Taxes

Localities in Virginia collect a 1% sales tax. They do not tax other items taxed at the State level.

Counties and cities in Virginia are separate taxing entities. Therefore, a company pays taxes to either a county or to a city.

If a company is located in a town, it pays town and county taxes except for utility taxes which are paid only to the town and the license tax which is paid only to the town unless town law permits the additional collection of a county tax.

Manufacturers pay real estate, machinery and tools, truck and automobile, utility, and sales taxes.

Nonmanufacturers pay real estate, tangible personal property, truck and automobile, utility, and sales taxes. They also may pay either a merchants' capital or a license tax.

Manufacturer's Tax Profile (Carroll) [pdf](#)

Non-Manufacturer's Tax Profile (Carroll) [pdf](#)

Manufacturer's Tax Profile (Galax) [pdf](#)

Non-Manufacturer's Tax Profile (Galax) [pdf](#)

Manufacturer's Tax Profile (Grayson) [pdf](#)

Non-Manufacturer's Tax Profile (Grayson) [pdf](#)

Outstanding medical facilities are available with local and university facilities within reasonable drive times.

Community Facilities

The community's health needs are well served by Twin County Regional Hospital with 149 beds, a staff of twenty-three medical specialists, and state-of-the-art diagnostic and treatment facilities. The Hospital's medical services include an emergency room, CT-scanning, laser eye surgery, nuclear medicine, and ultrasonography. Regional referral hospitals include the medical centers and teaching hospitals at Wake Forest University, the Virginia Commonwealth University Medical Center, Duke University, and the University of Virginia. Five clinics are also available in the Blue Ridge Crossroads region.

Seventy-one physicians and twenty-nine dentists provide medical services to the region.

Nursing home care is available at five facilities in the area.

Nearly 200 churches are located in the region, with most Protestant denominations and the Roman Catholic Church represented. The nearest Jewish synagogue is in Winston-Salem, North Carolina.

The area is fortunate to be served by two regional library systems. The Galax-Carroll Regional Library System is operated from the Vaughan Memorial Library in Galax and has a branch and two stations in Carroll County. Grayson County is part of the Wythe-Grayson Regional Library. The two systems have a combined collection of 136,000 volumes.

Various festivals and recreational facilities make the region an excellent place to work, play, live and start a business.

Community Facilities

(continued)

The Crossroads Rural Entrepreneurial Institute, located in Galax, houses a mixed-use business incubator facility, high-tech educational center for high school and college students, and a continuing education center for GED, workforce, and corporate training.

Galax is the commercial trade center for the area. Most retail activity is concentrated in either the central business district with over 130 businesses or in several surrounding commercial shopping centers.

The Blue Ridge Crossroads region has been recognized for its collaboration and accomplishments in economic development with the 2008 Jerry W. Davis Award for Entrepreneurial Excellence from the Appalachian Regional Commission, the 2009 Best Practices Award from the Council for Rural Virginia, the 2009 Achievement Award for Regional Collaboration from the Virginia Association of Counties, and the 2010 High Tech Excellence in Education Award from the Southwestern Virginia Technology Council.

Lifestyle

Offering boundless outdoor and cultural activities, Virginia's Blue Ridge Crossroads region is a wonderful place to live, play, and work. Our region is notable for its recreational activities including biking, camping, hiking, bridle trails, fishing and some of Virginia's most scenic mountain vistas with spectacular views from the Blue Ridge Parkway.

The region's vibrant cultural and arts community also attracts visitors of all kinds—from artists and art lovers to musicians and fans who want to experience world-class mountain music. The Blue Ridge Crossroads is the home of the Chestnut Creek School of the Arts, promoting and preserving the cultural heritage of southwest Virginia through art and music. Although typically a quiet community, each year thousands from around the country, and even the world, gather to attend events such as the Old Fiddler's Convention and the Hillsville VFW Gun Show and Flea Market.

In addition, our close proximity to I-77 and I-81 allow for easy travel to major metropolitan areas up and down the east coast, giving you both the serenity of the country while allowing you to stay connected.

Outdoor Recreation

You could spend weeks in our area and not take in everything our great outdoors has to offer. Grayson Highlands State Park, located in Jefferson National Forest, boasts numerous campsites, miles of fishable streams and hiking trails, and convenient access to the Appalachian Trail and the Blue Ridge Parkway. The New River Trail State Park parallels 39 miles of the New River as it rolls through Carroll County and offers streams for canoeing, trails for biking, and paths for strolling.

Nature lovers and outdoor recreation enthusiasts will never search for a vacation spot again. From horseback riding, hiking, mountain biking, and fishing to camping, canoeing, backpacking, and bird watching, the possibilities here are limitless.

Heritage events are held throughout the year. The region is rich with musical heritage and artistic talent. Two of the most popular events include the Wayne C. Henderson Music Festival held in mid-June at Grayson Highlands State Park and the Galax Fiddlers' Convention in early August. The Fiddlers' Convention is the nation's oldest and largest traditional Appalachian music gathering including bluegrass and old-time performers. Wayne Henderson is a National Heritage Fellow who is also a highly-acclaimed and world-recognized luthier and guitar "picker."

Lifestyle

(continued)

Music Heritage

There are several reasons why our region is known as the “World’s Capital of Old Time Mountain Music”. Each Friday, “Blue Ridge Country” WBRF-FM 98.1 broadcasts live bluegrass and folk music from the historic Rex Theater in downtown Galax, drawing listeners over the air from four states and online from more than 50 countries. Galax also hosts the annual Old Fiddler’s Convention each August. From its roots as a gathering of local musicians in 1935, the Fiddler’s Convention has grown exponentially, now bringing together bands and individual performers from all over the world who share a passion for old-time music. The Wayne C. Henderson Music Festival, the Fries Fiddler’s Convention also attract music lovers from around the region.

With big events like these it’s no wonder that the Blue Ridge Crossroads region is a main stop on the 300-mile route known as The Crooked Road, which connects the most important heritage music sites in Southwest Virginia. Our musical culture runs much deeper than popular broadcasts and big stages, however; smaller, weekly pickin’ sessions are held in numerous locations, including the Blue Ridge Music Center, and the attentive visitor may even hear the faint song of a harmonica or fiddle as one generation, in the spirit of mountain tradition, passes their musical heritage to the next.

Cultural Heritage

While our area may look serene and quiet from a distance, you’ll find upon entering the Blue Ridge Crossroads that this region is rich in history and alive with activity.

For most of the year the tiny town of Hillsville claims a population of fewer than 3,000. However, during Labor Day weekend, 300,000 treasure hunters and antique collectors descend upon the area for the annual Hillsville VFW Gun Show and Flea Market, the largest flea market east of the Mississippi. Similarly, the quaint city of Galax swells with musicians and music lovers during the annual Old Fiddler’s Convention. Numerous other activities, events, and festivals are held throughout the year, among them the Leaf and String Festival, Smoke on the Mountain and the Mountain Foliage Festival.

The region offers local governments working together for the benefit of industry and business by providing a friendly business environment.

Lifestyle

(continued)

Visitors who want to engage their inner history buff can step back in time as they meander around the Matthews Living History Farm Museum, a 21-acre working farm which gives visitors a glimpse into life on a farm circa 1900. Other great attractions for history enthusiasts include the 1874 Carroll County Courthouse and the Historic 1908 Courthouse in Grayson County. The 1908 Courthouse is home to many historical artifacts from the area and hosts a variety of local events, including a popular Music Jam every Wednesday.

In 2005, a small group of craftsmen began what is today 'Round the Mountain, a network of artisans whose mission is to promote sustainable economic development of the region's communities by assisting local artisans with marketing, educational, and entrepreneurial opportunities. Comprised of members from all over Southwest Virginia, 'Round the Mountain promotes education and tourism through a trail system and a variety of classes.

So come by and experience an area thriving with activity and rich in cultural heritage. We can't wait to share it with you.

[181-177 Crossroads Profile](#)
[Virginia's aCorridor](#)

The region offers a moderate four-season environment in an air quality attainment area.